

**Booking Office:**

TRIYOM CASA, Near Autograph Club, Abhva, Surat

**Corporate Office:**

3002 - 3003, World Trade Center, Udhna Darwaja,  
Ring Road, Surat - 395002

FOR BOOKING CALL: 1800 88 99 757, 9510 688 625

A PROJECT BY

**TRIYOM  
REALTY**  
Divine by Nature

STRUCTURE

  
ER. JALIL A. SHEIKH

VASTU CONSULTANT

**GURUDUTT  
SHENOY**

ARCHITECT

  
Sanjay Joshi

INDIAN GREEN BUILDING  
COUNCIL MEMBERSHIP



SCAN FOR  
WEBSITE



SUBSCRIBE ON  
YOUTUBE



FOLLOW US  
ON FACEBOOK



FOLLOW US  
ON INSTAGRAM



SCAN TO SCHEDULE  
THE SITE VISIT



 **TRIYOM  
casa**

 **TRIYOM  
casa**





# Our Brand Story

Like how a perimeter defines every area, every human interaction necessitates a boundary. Our boundaries give us a sense of safety and, thus freedom. However the heart of these boundaries, we subconsciously desire a place, we can call our own. Where this place can provide you with an everlasting and serene living experience?

Introducing Triyom. We at Triyom understand the importance of spaces. We believe that well-being is an expression of the three dimensions of divinity - mental peace, Nature and physical balance. Every Triyom home embodies the three essences to give you an exquisite holistic Inner experience. Our properties are carefully handcrafted using elements and design chosen to envelop you in a spatial language of peaceful living that lets you transcend into divine by nature.

## VISION

To create living spaces that inspire communities to build sacred relationship with oneself and deliver on a sense of enriched & refined living.

## MISSION

Triyom aspires to create a retreat that offers a holistic living experience by establishing habitats encouraging people to foster a mind, body and soul connection. We aim to construct abodes that accommodate natural elements which will nurture a sense of belongings to surroundings.

## CORE VALUES

**Spirituality** - Epitomize and manifest ethereal qualities of sacredness, wholeness, purpose and balance.

**Customer-Centricity** - Following a customers first policy. Identity and address customer needs by innovative offerings to meet changing consumer demands.  
Retain customer loyalty through delight.

**Trust** - Build enduring relationships. Invest in delivering on the brand promise.

**Responsibility** - Provide an eco-friendly and safe environment for all stakeholders.  
Propagate the idea of conscious living through brand offerings.

This brochure is only for organizer's internal review purpose & necessary suggestions and not be the part of the legal agreement from developer.





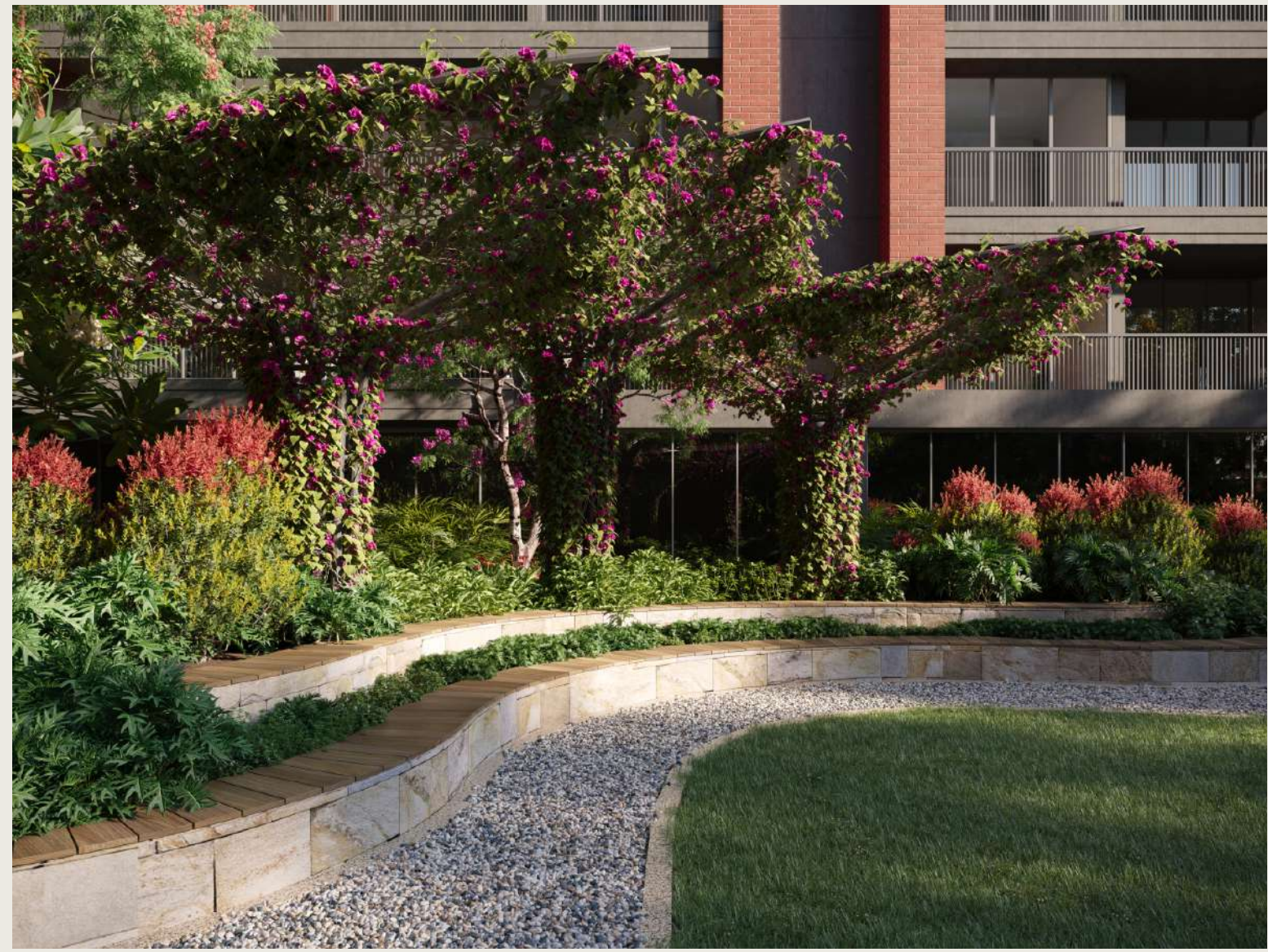
TRIYOM CASA IS EVERY ASPIRING FAMILY'S  
DREAM HOME. THE APARTMENT ARCHITECTURE  
IS STUDDED WITH ELEMENTS THAT SPEAK TO  
SOFT NATURAL AND RUSTIC TONES THAT ARE  
ENDURING AND SPECIAL.  
CASA IS HOLIDAY HOME ONE SEEKS AT A DESTINATION.



This brochure is only for organizer's internal review purpose & necessary suggestions and not be the part of the legal agreement from developer.









# Key Amenities

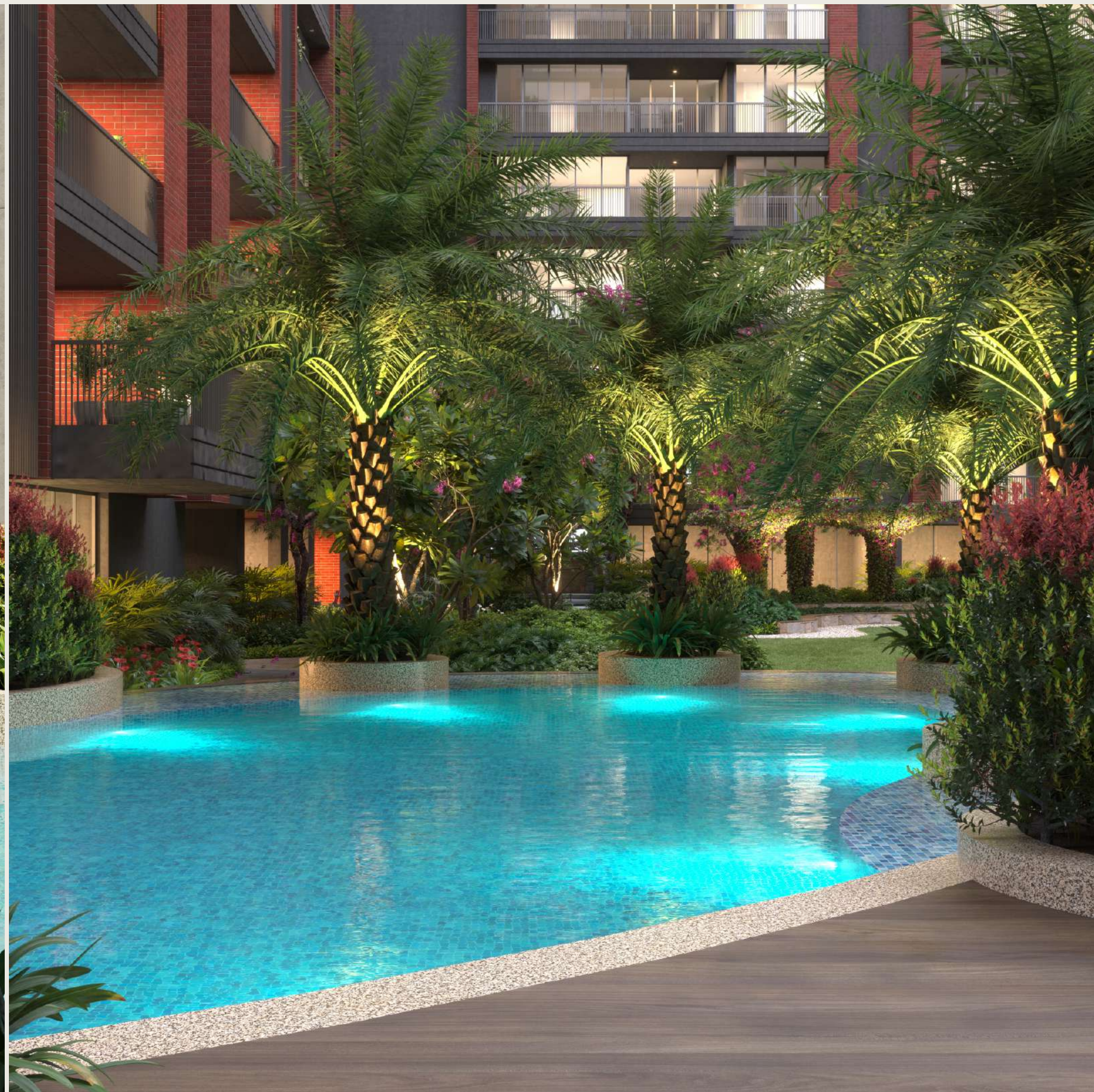


 Designer Garden Studded With Artistic Landscaping	 8 Feet Wide Jogging Track	 Azure Blue Swimming Pool	 Baby Swimming Pool
 Fully Equipped Modern Gym	 Separate Steam & Sauna Rooms for Men & Women	 Multi-purpose Court	 Provision of Day Care for Kids
 Spacious Banquet Hall & Yoga Room	 Open Deck Adjoining Banquet Hall	 Indoor Gaming Zone	 Pool Side Open Deck
 Designer Water Structures	 Magnificent Water Fountains	 Separate Society Office	 Designer Gazebos - 2 Nos
 Kid's Zone with Sand-pit	 Well Stocked Library	 24X7 CCTV Surveillance	 Designated Waiting Area for School Buses & Visitor's Parking

This brochure is only for organizer’s internal review purpose & necessary suggestions and not be the part of the legal agreement from developer.











#### LEGEND

1. Entry/exit
2. Multipurpose lawn
3. Party lawn
4. Walkway
5. Pergola seating
6. Reflexology pathway
7. Amphitheater
8. Lap pool
9. Kids pool
10. Cafe
11. Deck
12. Overflow edge
13. Outdoor gym
14. Kids play area
15. Seating deck
16. Banquet Hall
17. Meter Room
18. Gym
19. Steam & Sauna
20. Indoor Game
21. Day Care Center
22. Library

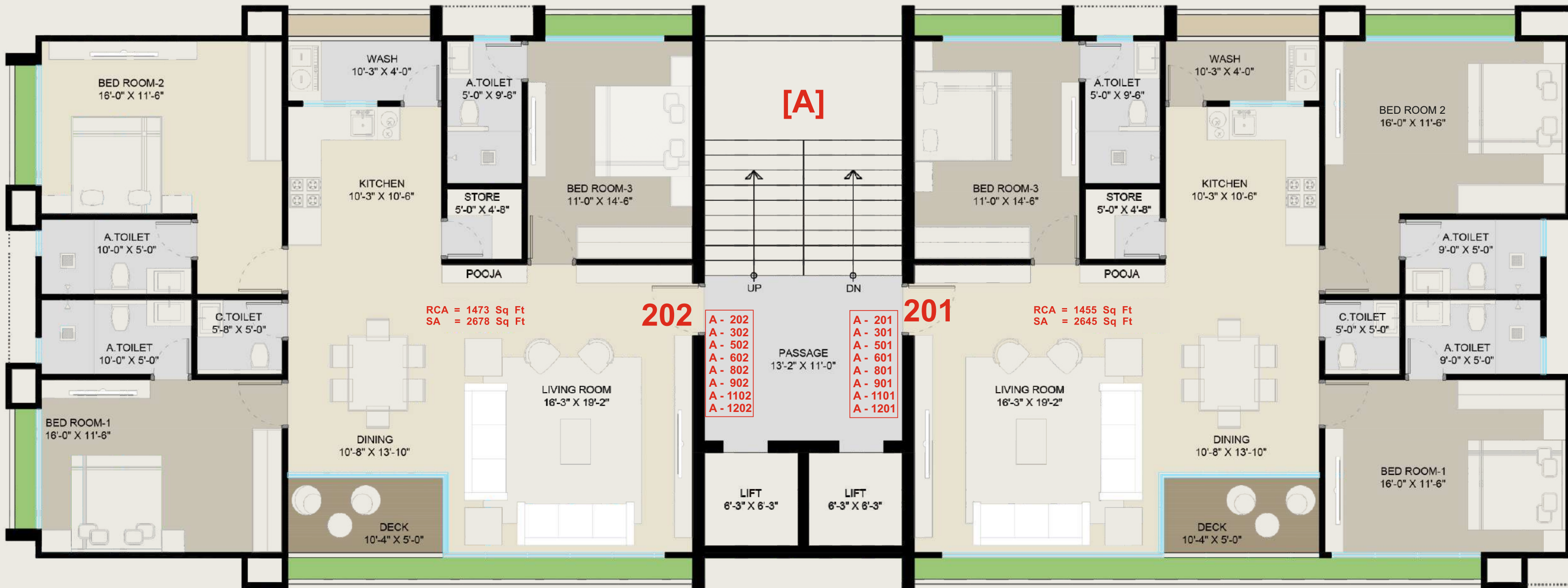


This brochure is only for organizer's internal review purpose & necessary suggestions and not be the part of the legal agreement from developer.



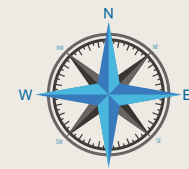
This brochure is only for organizer's internal review purpose & necessary suggestions and not be the part of the legal agreement from developer.



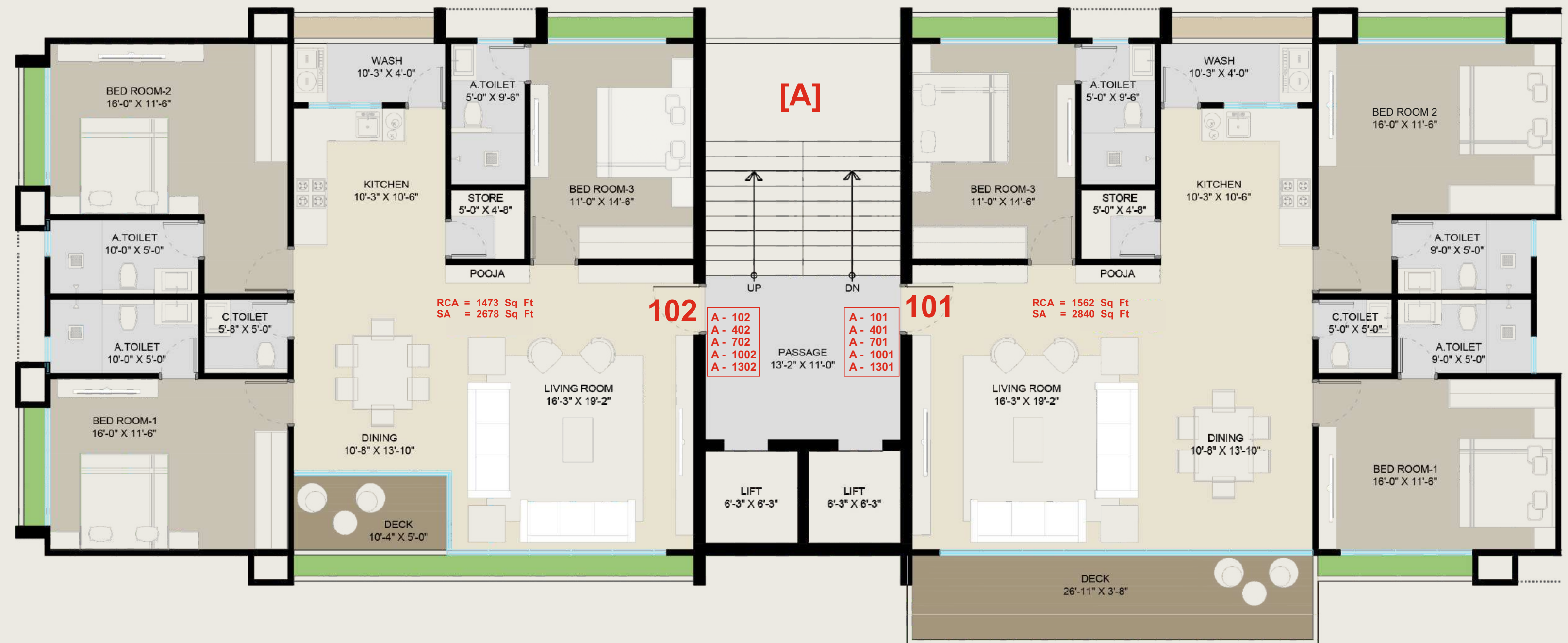


## TOWER A

Typical Floor Plan  
(2nd, 3rd, 5th, 6th, 8th, 9th, 11th & 12th Floor)



This brochure is only for organizer's internal review purpose & necessary suggestions and not be the part of the legal agreement from developer.



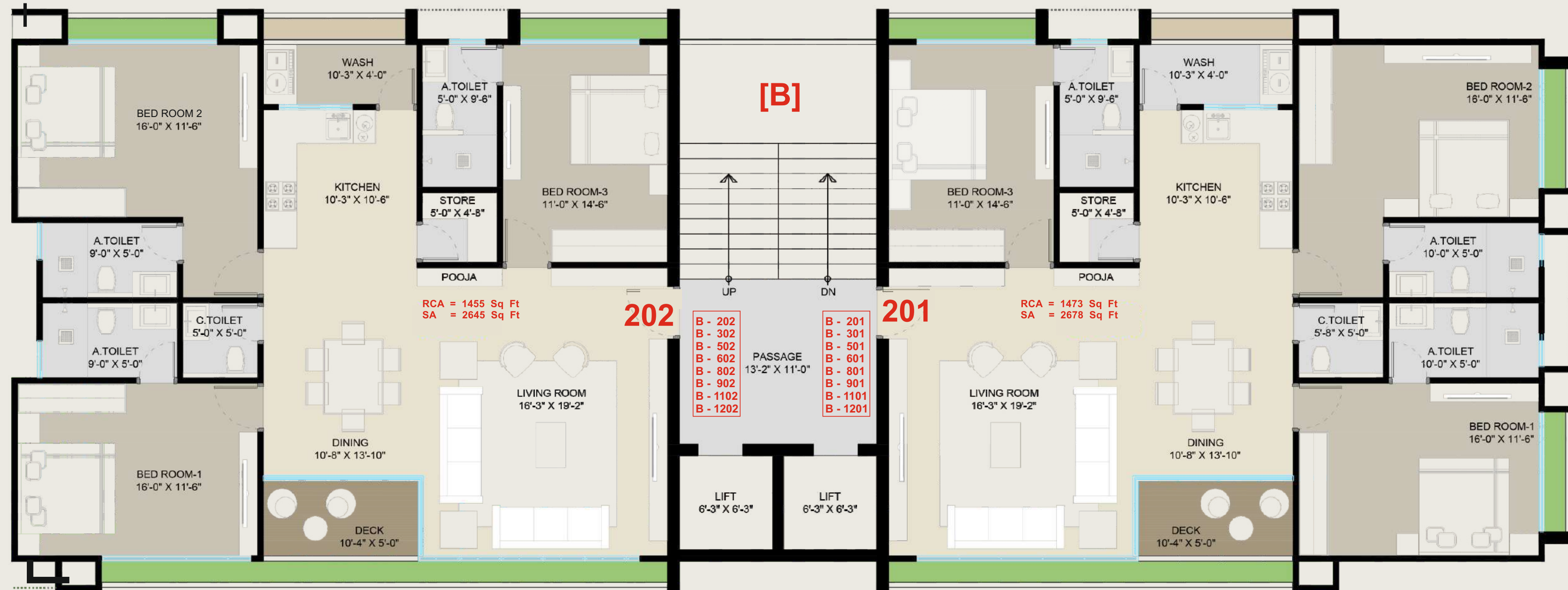
## TOWER A

Typical Floor Plan  
(1st, 4th, 7th, 10th & 13th Floor)



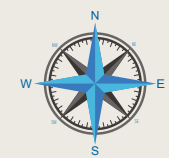
This brochure is only for organizer's internal review purpose & necessary suggestions and not be the part of the legal agreement from developer.



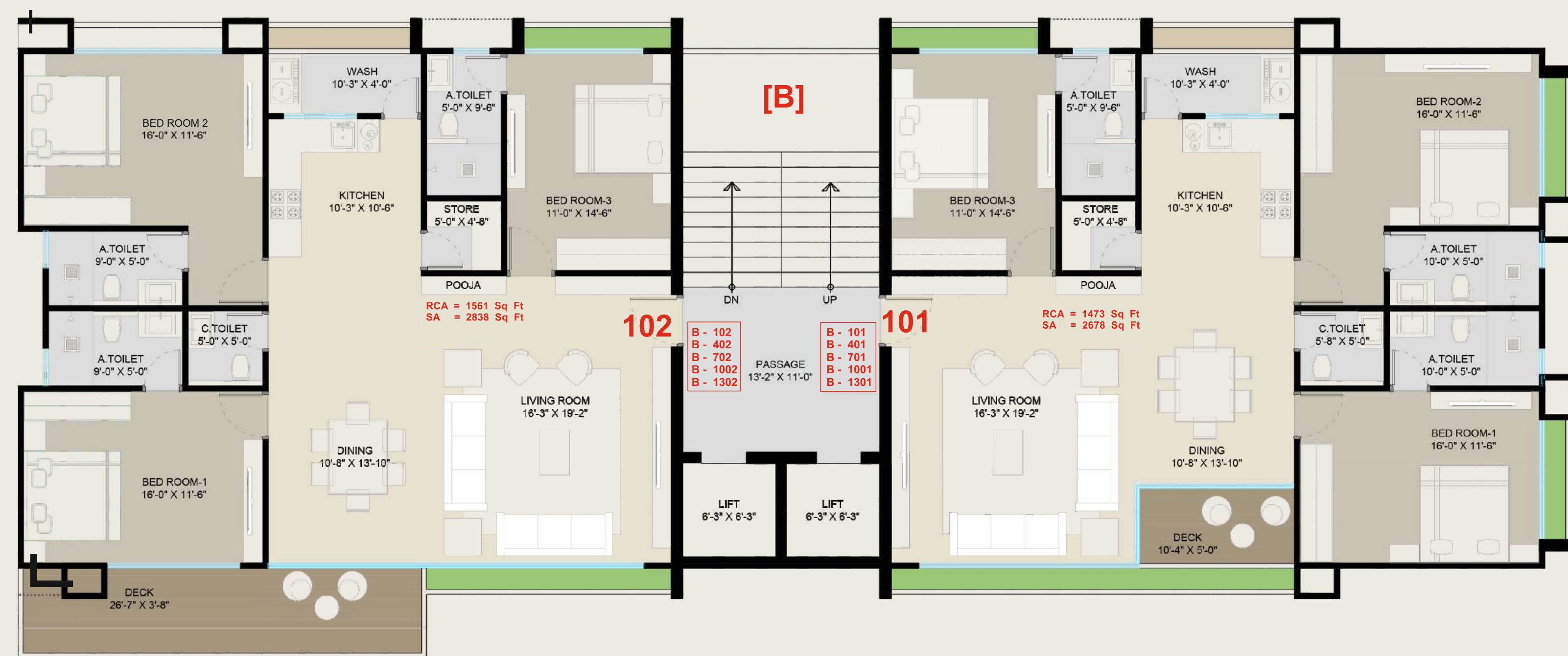


## TOWER B

Typical Floor Plan  
(2nd, 3rd, 5th, 6th, 8th, 9th, 11th & 12th Floor)



This brochure is only for organizer's internal review purpose & necessary suggestions and not be the part of the legal agreement from developer.



## TOWER B

Typical Floor Plan  
(1st, 4th, 7th, 10th & 13th Floor)



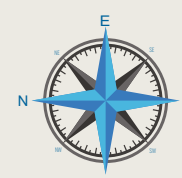
This brochure is only for organizer's internal review purpose & necessary suggestions and not be the part of the legal agreement from developer.



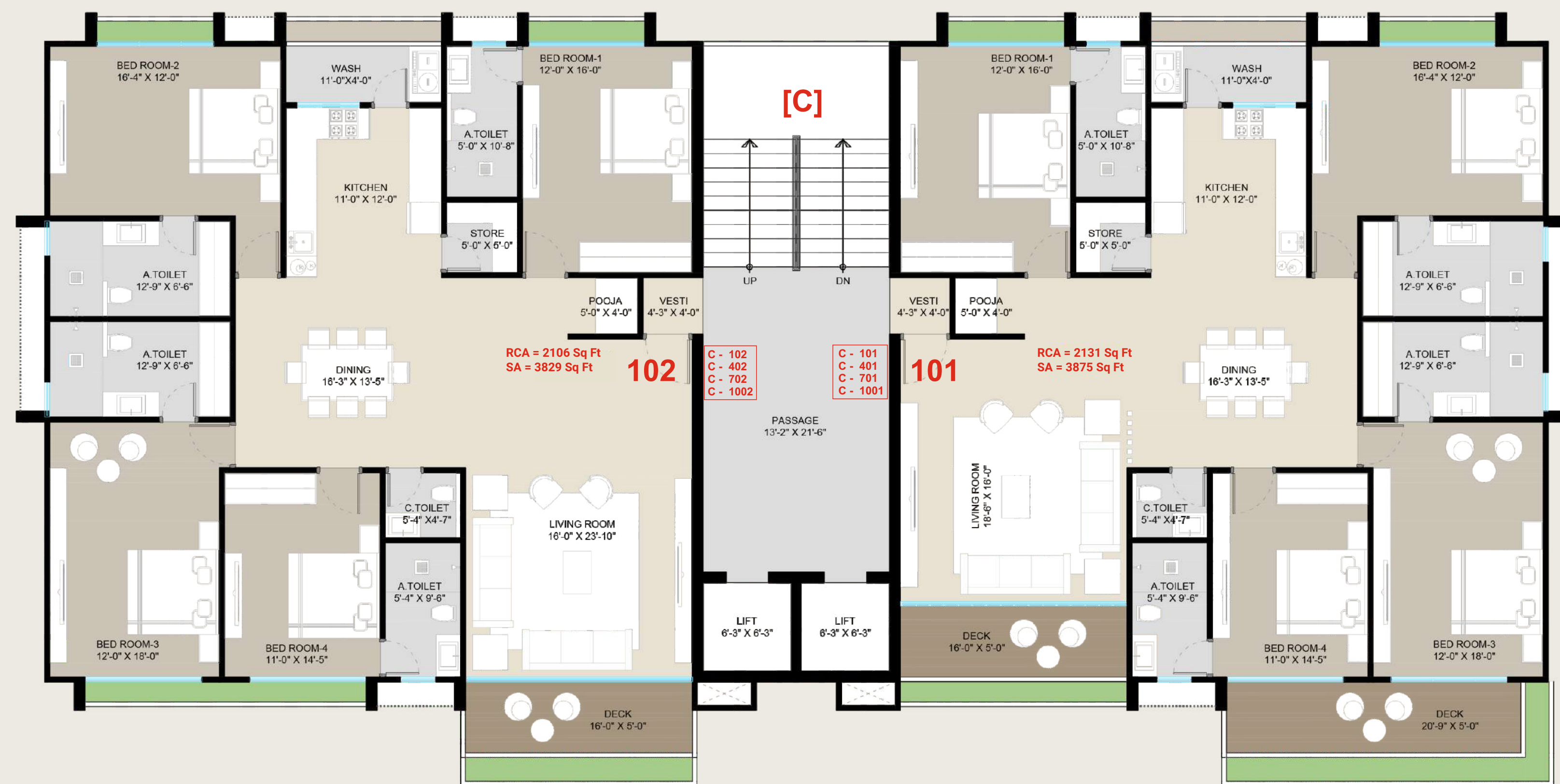


## TOWER C

Typical Floor Plan  
(2nd, 3rd, 5th, 6th, 8th, 9th & 11th Floor)



This brochure is only for organizer's internal review purpose & necessary suggestions and not be the part of the legal agreement from developer.



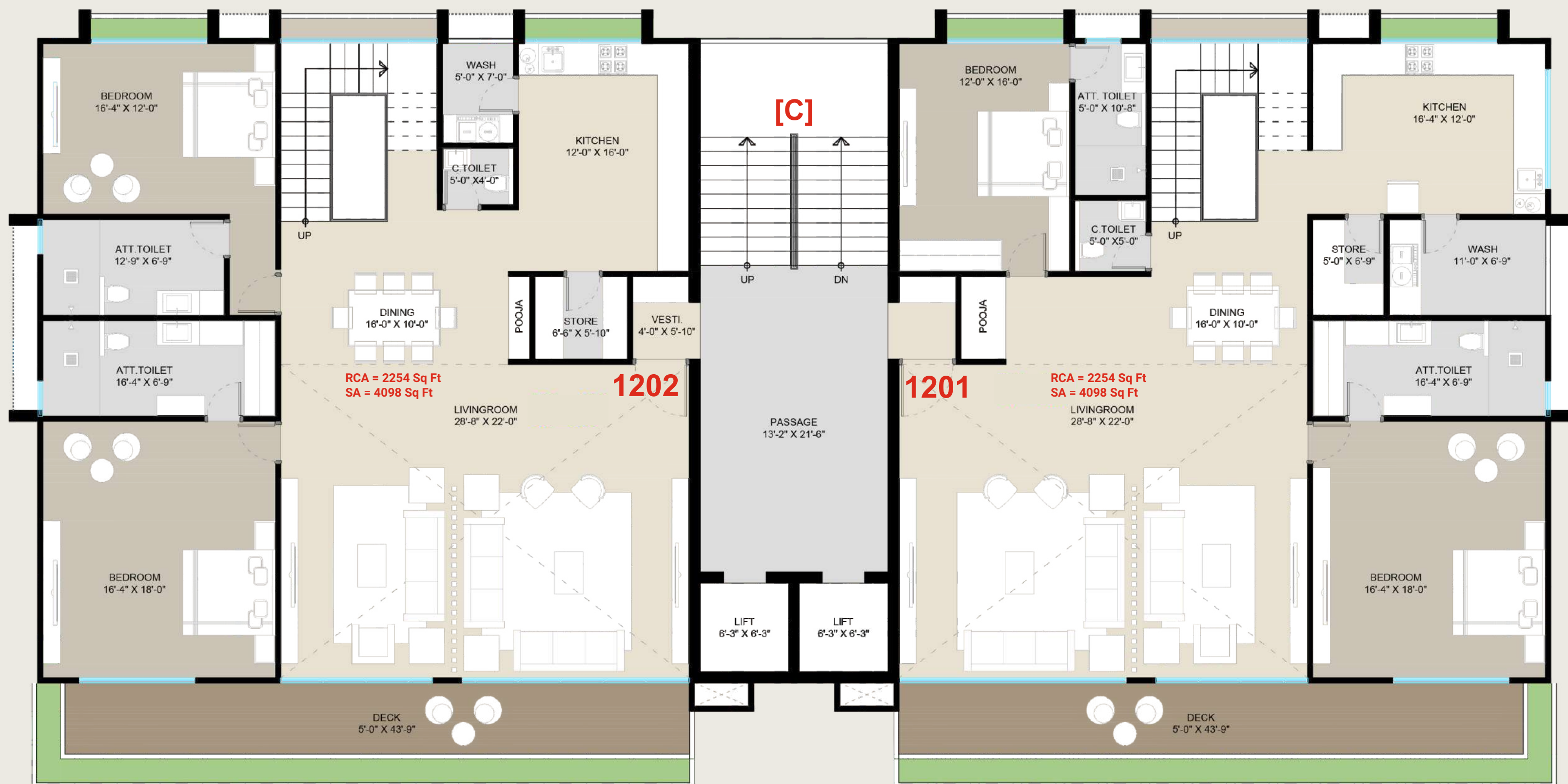
## TOWER C

Typical Floor Plan  
(1st, 4th, 7th & 10th Floor)



This brochure is only for organizer's internal review purpose & necessary suggestions and not be the part of the legal agreement from developer.



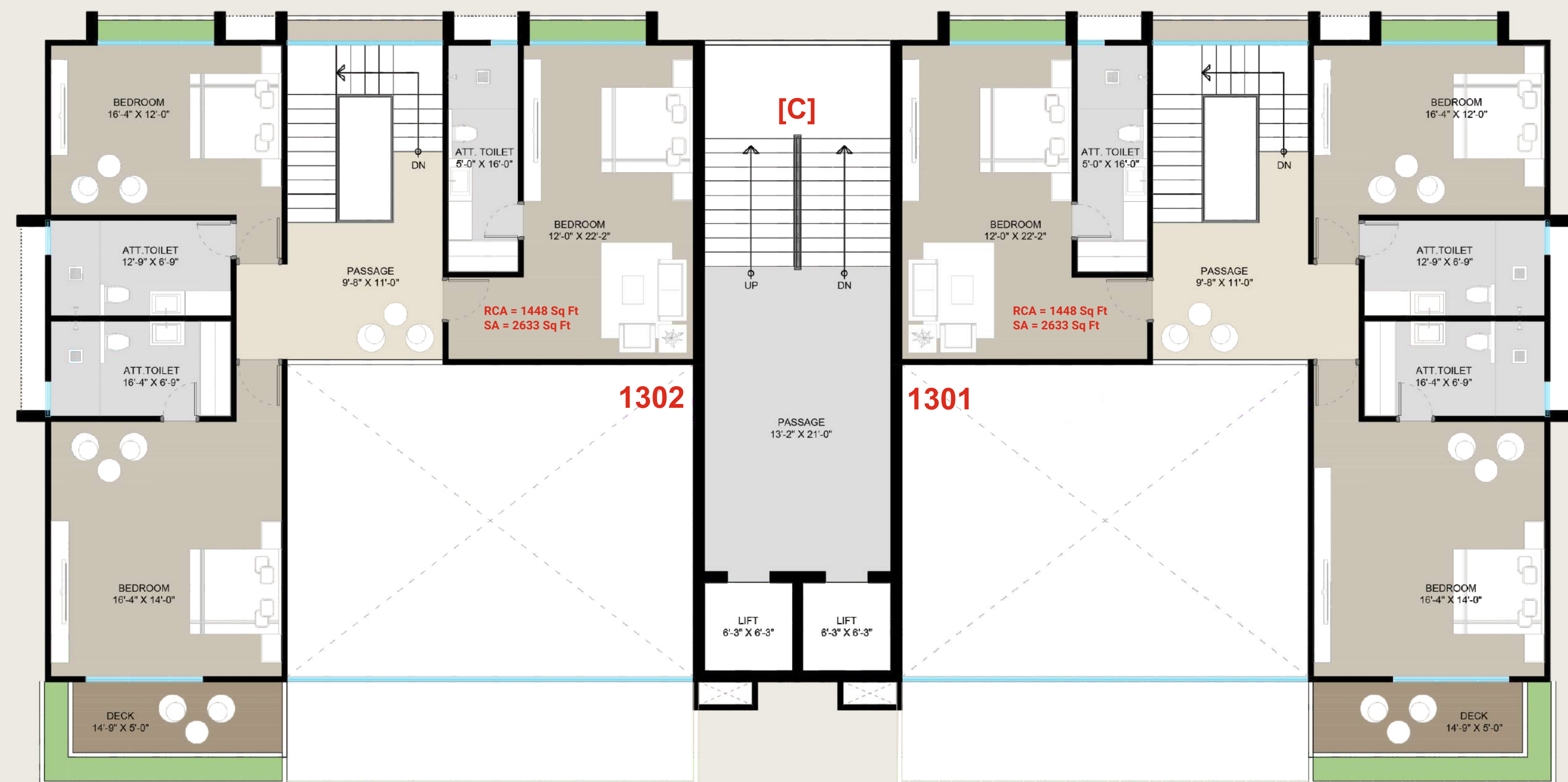


## TOWER C

Floor Plan - 12th Floor  
Penthouse up to 13th Floor

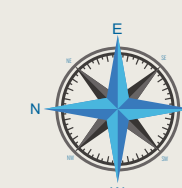


This brochure is only for organizer's internal review purpose & necessary suggestions and not be the part of the legal agreement from developer.



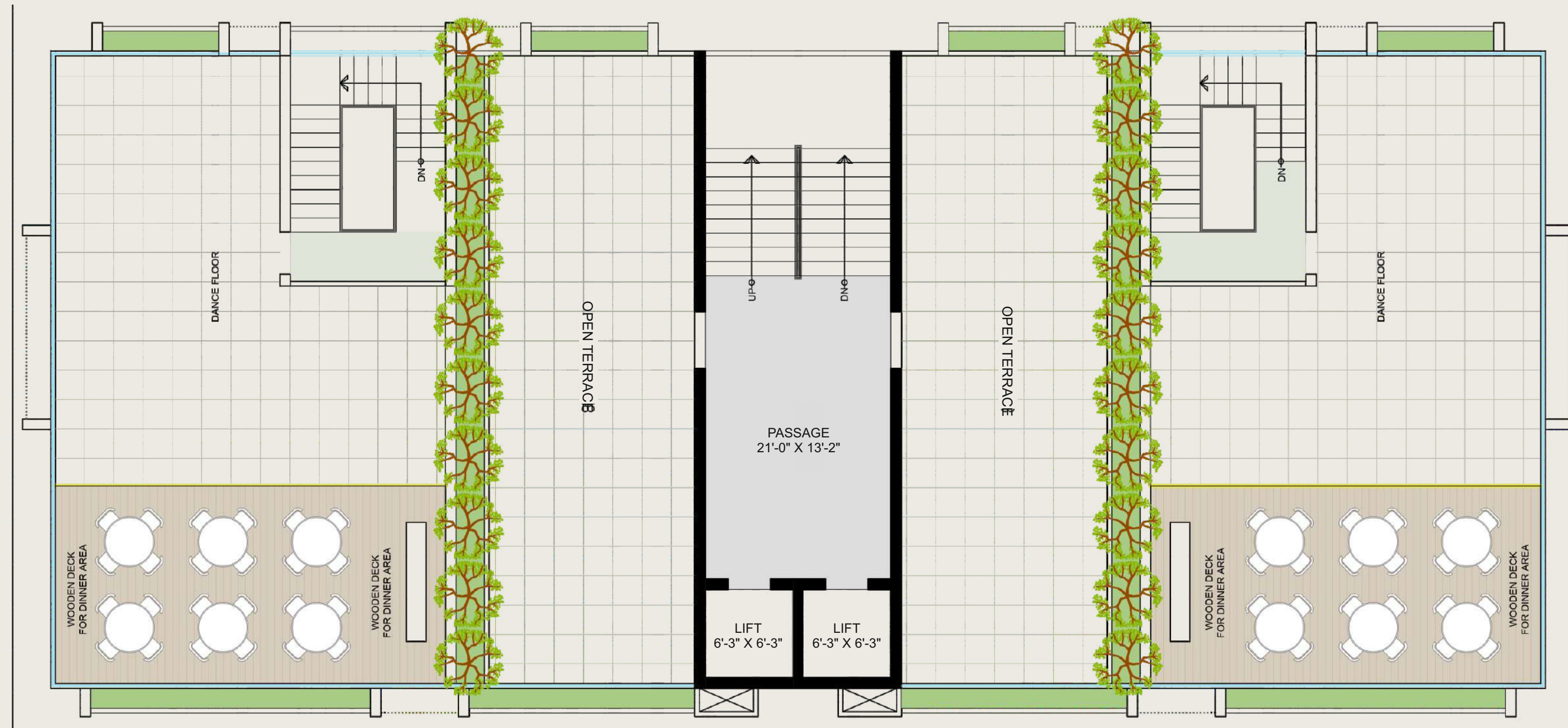
## TOWER C

Floor Plan 13th Floor  
Penthouse from 12th Floor

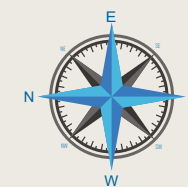


This brochure is only for organizer's internal review purpose & necessary suggestions and not be the part of the legal agreement from developer.





**TOWER C**  
Terrace Floor Plan



This brochure is only for organizer's internal review purpose & necessary suggestions and not be the part of the legal agreement from developer.



This brochure is only for organizer's internal review purpose & necessary suggestions and not be the part of the legal agreement from developer.





**TOWER D**  
Typical Floor Plan  
(2nd, 3rd, 5th, 6th, 8th, 9th, 11th & 12th Floor)

This brochure is only for organizer's internal review purpose & necessary suggestions and not be the part of the legal agreement from developer.



**TOWER D**  
Typical Floor Plan  
(1st, 4th, 7th, 10th & 13th Floor)

This brochure is only for organizer's internal review purpose & necessary suggestions and not be the part of the legal agreement from developer.



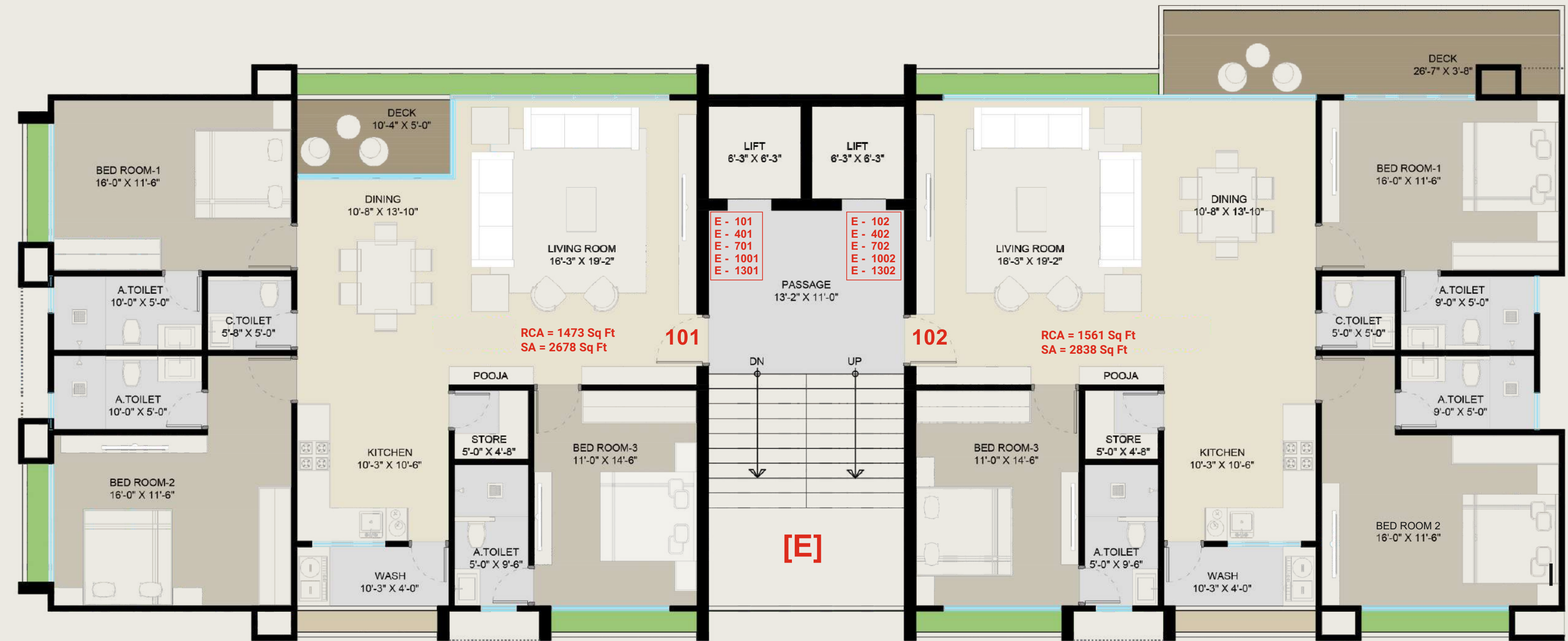


## TOWER E

Typical Floor Plan  
(2nd, 3rd, 5th, 6th, 8th, 9th, 11th & 12th Floor)



This brochure is only for organizer's internal review purpose & necessary suggestions and not be the part of the legal agreement from developer.



## TOWER E

Typical Floor Plan  
(1st, 4th, 7th, 10th & 13th Floor)



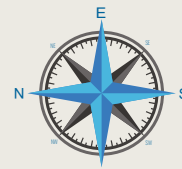
This brochure is only for organizer's internal review purpose & necessary suggestions and not be the part of the legal agreement from developer.





## TOWER F

Typical Floor Plan  
(2nd, 3rd, 5th, 6th, 8th, 9th & 11th Floor)

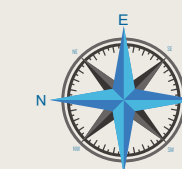


This brochure is only for organizer's internal review purpose & necessary suggestions and not be the part of the legal agreement from developer.



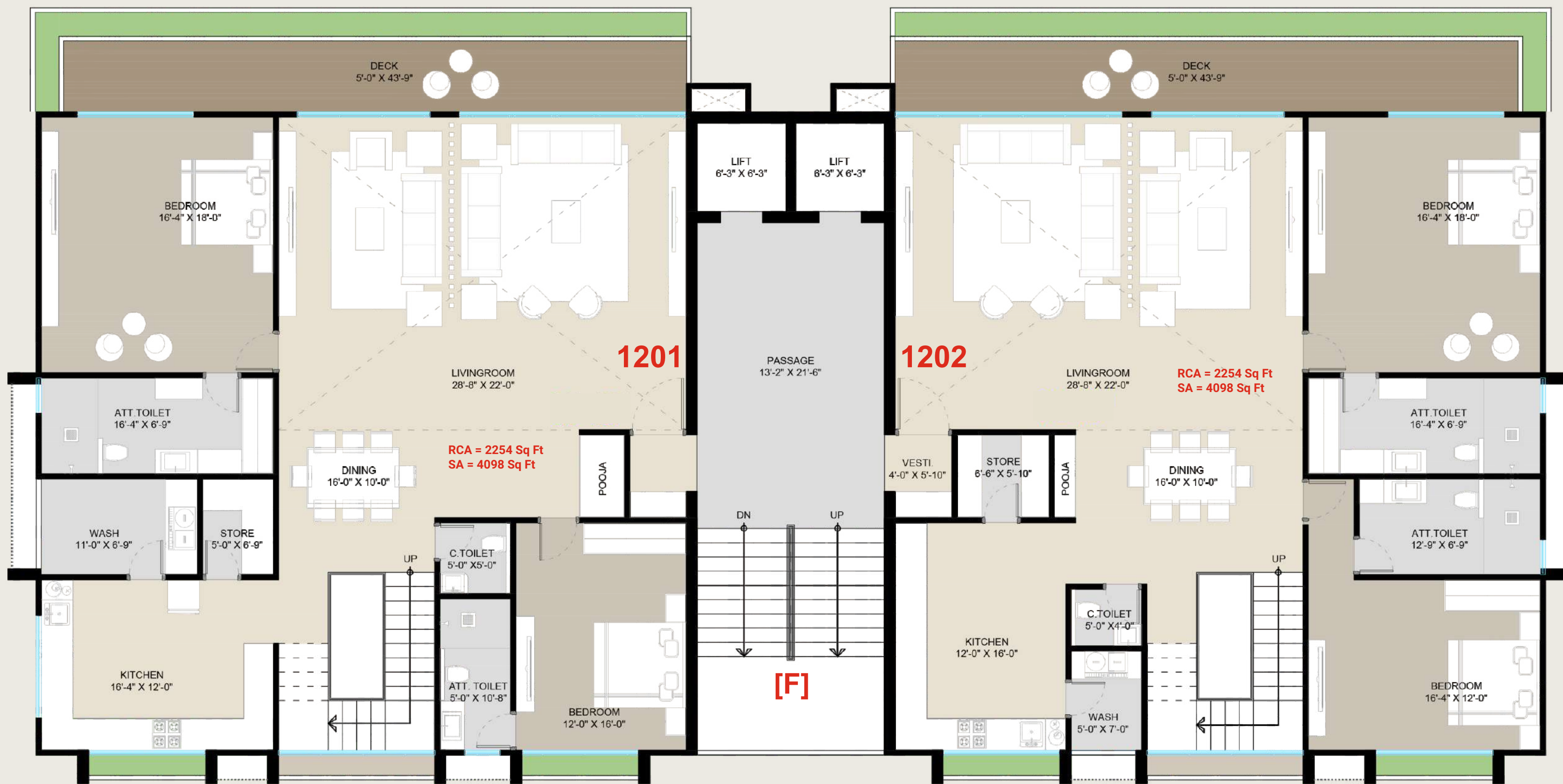
## TOWER F

Typical Floor Plan  
(1st, 4th, 7th & 10th Floor)



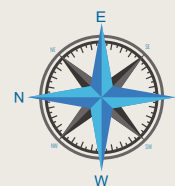
This brochure is only for organizer's internal review purpose & necessary suggestions and not be the part of the legal agreement from developer.



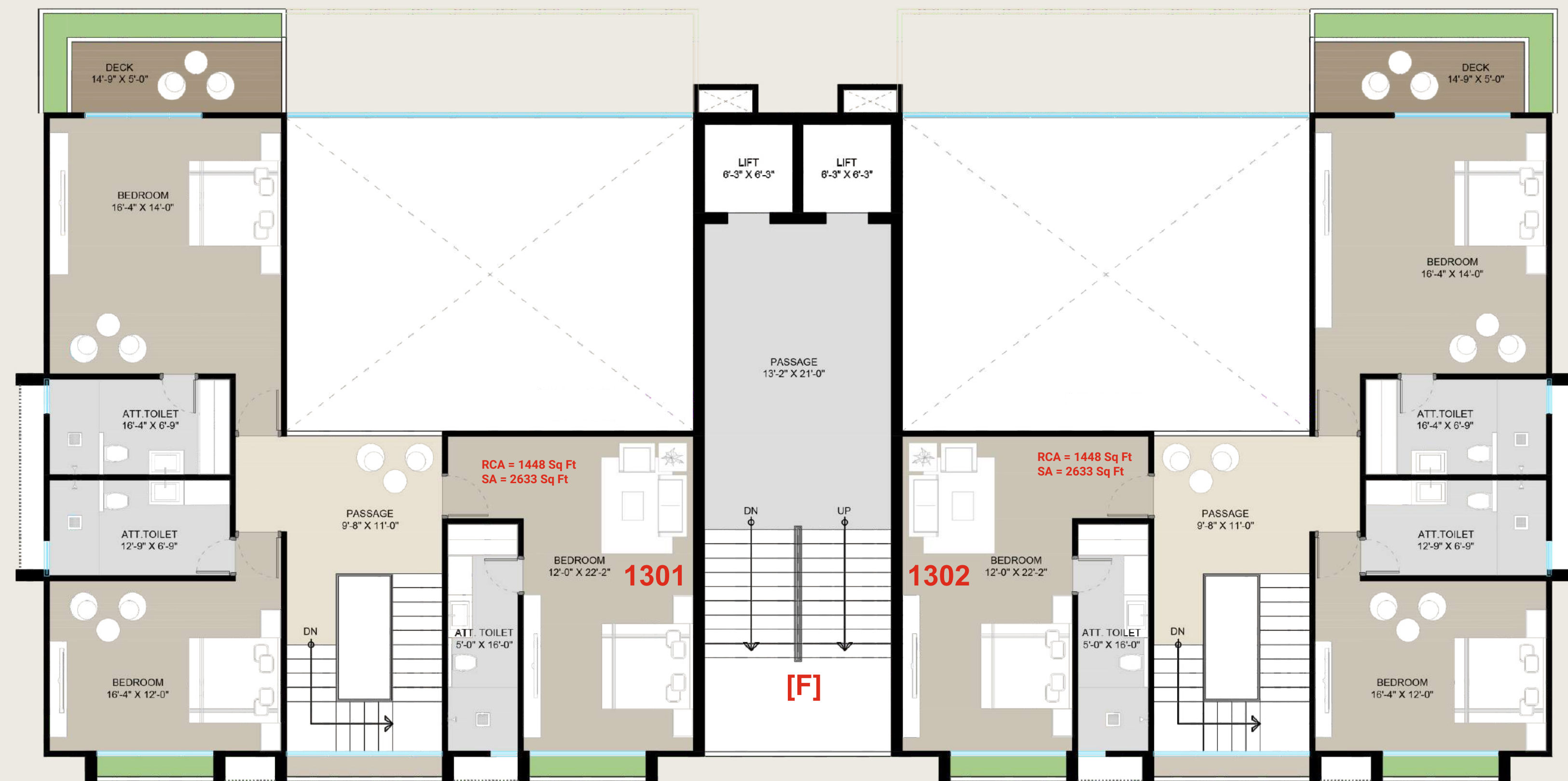


## TOWER F

Floor Plan - 12th Floor  
Penthouse up to 13th Floor

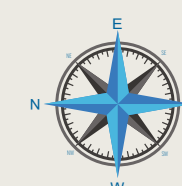


This brochure is only for organizer's internal review purpose & necessary suggestions and not be the part of the legal agreement from developer.



## TOWER F

Floor Plan - 13th Floor  
Penthouse from 12th Floor)

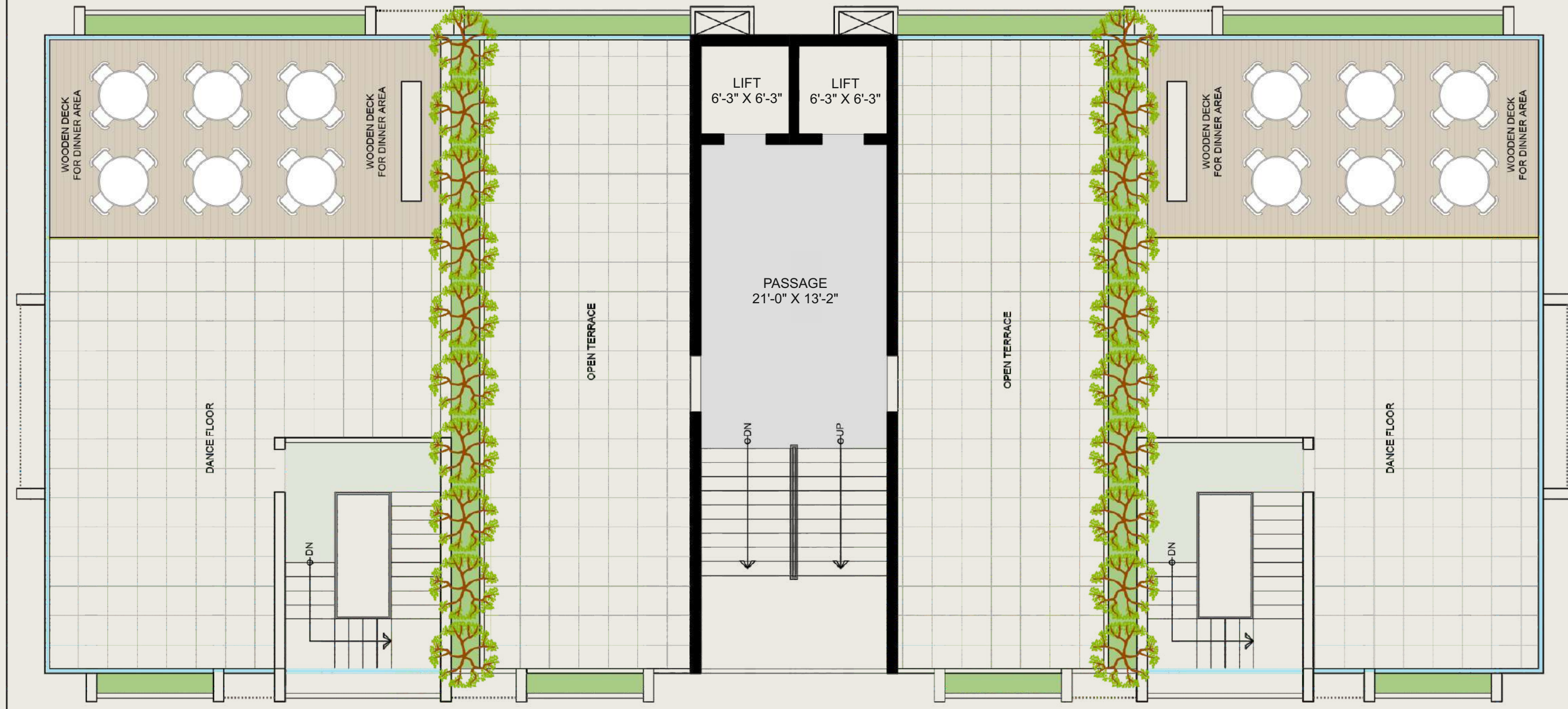
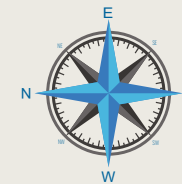


This brochure is only for organizer's internal review purpose & necessary suggestions and not be the part of the legal agreement from developer.



# TOWER F

Terrace Floor Plan



This brochure is only for organizer's internal review purpose & necessary suggestions and not be the part of the legal agreement from developer.

## LOCATION MAP

### WE REQUEST

- Stamp duty, registration charges, legal charges, society maintenance charges (from the date of BUC) etc. shall be borne by the purchaser.
- GST, TDS & all other taxes prevailing or that may be levied in future will be borne by purchaser.
- Any additional charges or duties levied by the government / local authorities during or after the completion of the scheme like SMC Tax, will be borne by the purchaser.
- In the interest of continual developments & quality of construction, the developer reserve all rights to make any changes in the scheme including technical specification, designs, planning, layout & all purchaser shall abide by such changes.
- Changes / Alteration of any nature including elevation, exterior color scheme, balcony grill or any other changes affecting the overall design concept & look of the scheme shall strictly not be permitted during or after the completion of the scheme.
- Any RCC member (beam, column & slab etc.) must not be damaged during the interior work or utilizing the unit.
- Low-voltage cables such as telephone, TV and internet cables shall be strictly laid as per consultant's service drawings with prior consent of developer / builder office.
- No wire / cables / conduits shall be laid or installed in a way such that they form hanging formation on the building exterior face.
- Common passage / landscaped area not allowed to be used for personal purpose.
- This brochure is intended only for easy display the information of the scheme does not form any part of legal documents.

### NOTES

- All rights for Alteration / Modification in design or specifications suggested by architects and / or developer shall be binding to all the concerned parties.
- BUC (Building Use Certificate) as per SMC rules, clear title for loan purpose.
- This brochure is for display the information at personal level and by no means allowed to be circulated, distributed and shared without prior concern of builder.
- By no means, this brochure will form any part of any legal document.

### LEGAL DISCLAIMER

- All furniture / objects shown in the plan are for presentation & understanding purpose only. By no means it will form a part of final deliverable product.
- All the elements, objects, treatments, materials, equipment & color scheme shown are artist's impression and purely for presentation purpose. By no means, it will form a part of the amenities, features or specifications of our final products.



This brochure is only for organizer's internal review purpose & necessary suggestions and not be the part of the legal agreement from developer.



TRIYOM CASA (3 BHK)

A TOWER (3BHK)			
FLOOR	FLAT NO.	AS PER RERA NORMS (SQ.FT.)	
		CARPET (RCA)	SUPER BUILT UP (SRBA)
FIRST	A 101	1562	2840
	A 102	1473	2678
SECOND	A 201	1455	2645
TYPICAL FLOOR	A 202	1473	2678
THIRD	A 301	1455	2645
TYPICAL FLOOR	A 302	1473	2678
FOURTH	A 401	1562	2840
	A 402	1473	2678
FIFTH	A 501	1455	2645
TYPICAL FLOOR	A 502	1473	2678
SIXTH	A 601	1455	2645
TYPICAL FLOOR	A 602	1473	2678
SEVENTH	A 701	1562	2840
	A 702	1473	2678
EIGHTH	A 801	1455	2645
TYPICAL FLOOR	A 802	1473	2678
NINETH	A 901	1455	2645
TYPICAL FLOOR	A 902	1473	2678
TENTH	A 1001	1562	2840
	A 1002	1473	2678
ELEVENTH	A 1101	1455	2645
TYPICAL FLOOR	A 1102	1473	2678
TWELFTH	A 1201	1455	2645
TYPICAL FLOOR	A 1202	1473	2678
THIRTEENTH	A 1301	1562	2840
	A 1302	1473	2678

B TOWER (3BHK)			
FLOOR	FLAT NO.	AS PER RERA NORMS (SQ.FT.)	
		CARPET (RCA)	SUPER BUILT UP (SRBA)
FIRST	B 101	1473	2678
	B 102	1561	2838
SECOND	B 201	1473	2678
TYPICAL FLOOR	B 202	1455	2645
THIRD	B 301	1473	2678
TYPICAL FLOOR	B 302	1455	2645
FOURTH	B 401	1473	2678
	B 402	1561	2838
FIFTH	B 501	1473	2678
TYPICAL FLOOR	B 502	1455	2645
SIXTH	B 601	1473	2678
TYPICAL FLOOR	B 602	1455	2645
SEVENTH	B 701	1473	2678
	B 702	1561	2838
EIGHTH	B 801	1473	2678
TYPICAL FLOOR	B 802	1455	2645
NINETH	B 901	1473	2678
TYPICAL FLOOR	B 902	1455	2645
TENTH	B 1001	1473	2678
	B 1002	1561	2838
ELEVENTH	B 1101	1473	2678
TYPICAL FLOOR	B 1102	1455	2645
TWELFTH	B 1201	1473	2678
TYPICAL FLOOR	B 1202	1455	2645
THIRTEENTH	B 1301	1473	2678
	B 1302	1561	2838

D TOWER (3BHK)			
FLOOR	FLAT NO.	AS PER RERA NORMS (SQ.FT.)	
		CARPET (RCA)	SUPER BUILT UP (SRBA)
FIRST	D 101	1562	2840
	D 102	1473	2678
SECOND	D 201	1455	2645
TYPICAL FLOOR	D 202	1473	2678
THIRD	D 301	1455	2645
TYPICAL FLOOR	D 302	1473	2678
FOURTH	D 401	1562	2840
	D 402	1473	2678
FIFTH	D 501	1455	2645
TYPICAL FLOOR	D 502	1473	2678
SIXTH	D 601	1455	2645
TYPICAL FLOOR	D 602	1473	2678
SEVENTH	D 701	1562	2840
	D 702	1473	2678
EIGHTH	D 801	1455	2645
TYPICAL FLOOR	D 802	1473	2678
NINETH	D 901	1455	2645
TYPICAL FLOOR	D 902	1473	2678
TENTH	D 1001	1562	2840
	D 1002	1473	2678
ELEVENTH	D 1101	1455	2645
TYPICAL FLOOR	D 1102	1473	2678
TWELFTH	D 1201	1455	2645
TYPICAL FLOOR	D 1202	1473	2678
THIRTEENTH	D 1301	1562	2840
	D 1302	1473	2678

E TOWER (3BHK)			
FLOOR	FLAT NO.	AS PER RERA NORMS (SQ.FT.)	
		CARPET (RCA)	SUPER BUILT UP (SRBA)
FIRST	E 101	1473	2678
	E 102	1561	2838
SECOND	E 201	1473	2678
TYPICAL FLOOR	E 202	1455	2645
THIRD	E 301	1473	2678
TYPICAL FLOOR	E 302	1455	2645
FOURTH	E 401	1473	2678
	E 402	1561	2838
FIFTH	E 501	1473	2678
TYPICAL FLOOR	E 502	1455	2645
SIXTH	E 601	1473	2678
TYPICAL FLOOR	E 602	1455	2645
SEVENTH	E 701	1473	2678
	E 702	1561	2838
EIGHTH	E 801	1473	2678
TYPICAL FLOOR	E 802	1455	2645
NINETH	E 901	1473	2678
TYPICAL FLOOR	E 902	1455	2645
TENTH	E 1001	1473	2678
	E 1002	1561	2838
ELEVENTH	E 1101	1473	2678
TYPICAL FLOOR	E 1102	1455	2645
TWELFTH	E 1201	1473	2678
TYPICAL FLOOR	E 1202	1455	2645
THIRTEENTH	E 1301	1473	2678
	E 1302	1561	2838

C TOWER (4BHK)			
FLOOR	FLAT NO.	AS PER RERA NORMS (SQ.FT.)	
		CARPET (RCA)	SUPER BUILT UP (SRBA)
FIRST	C 101	2131	3875
	C 102	2106	3829
SECOND	C 201	2020	3673
TYPICAL FLOOR	C 202	2020	3673
THIRD	C 301	2020	3673
TYPICAL FLOOR	C 302	2020	3673
FOURTH	C 401	2131	3875
	C 402	2106	3829
FIFTH	C 501	2020	3673
TYPICAL FLOOR	C 502	2020	3673
SIXTH	C 601	2020	3673
TYPICAL FLOOR	C 602	2020	3673
SEVENTH	C 701	2131	3875
	C 702	2106	3829
EIGHTH	C 801	2020	3673
TYPICAL FLOOR	C 802	2020	3673
NINETH	C 901	2020	3673
TYPICAL FLOOR	C 902	2020	3673
TENTH	C 1001	2131	3875
	C 1002	2106	3829
ELEVENTH	C 1101	2020	3673
TYPICAL FLOOR	C 1102	2020	3673
TWELFTH	C 1201	2254	4098
	C 1202	2254	4098
THIRTEENTH	C 1301	1448	2633
	C 1302	1448	2633
Terrace	C 1401	1356	678
	C 1402	1356	678
PH			
1201+1301		1202+1302	
7409		7409	

F TOWER (4BHK)			
FLOOR	FLAT NO.	AS PER RERA NORMS (SQ.FT.)	
		CARPET (RCA)	SUPER BUILT UP (SRBA)
FIRST	F 101	2131	3875
	F 102	2106	3829
SECOND	F 201	2020	3673
TYPICAL FLOOR	F 202	2020	3673
THIRD	F 301	2020	3673
TYPICAL FLOOR	F 302	2020	3673
FOURTH	F 401	2131	3875
	F 402	2106	3829
FIFTH	F 501	2020	3673
TYPICAL FLOOR	F 502	2020	3673
SIXTH	F 601	2020	3673
TYPICAL FLOOR	F 602	2020	3673
SEVENTH	F 701	2131	3875
	F 702	2106	3829
EIGHTH	F 801	2020	3673
TYPICAL FLOOR	F 802	2020	3673
NINETH	F 901	2020	3673
TYPICAL FLOOR	F 902	2020	3673
TENTH	F 1001	2131	3875
	F 1002	2106	3829
ELEVENTH	F 1101	2020	3673
TYPICAL FLOOR	F 1102	2020	3673
TWELFTH	F 1201	2254	4098
	F 1202	2254	4098
THIRTEENTH	F 1301	1448	2633
	F 1302	1448	2633
Terrace	F 1401	1356	678
	F 1402	1356	678
PH			
1201+1301		1202+1302	
7409		7409	

REMARKS: S-W CORNER FLATS - HIGHLIGHTED WITH ORANGE COLOR

TRIYOM CASA (4 BHK)

